

EBARA OPEN CIRCUIT CROSS FLOW SQUARE TYPE COOLING TOWER

SHINWA
COOLING TOWER

MODEL CDW



FEATURES OF CDW MODELS

SUPERIOR MATERIAL, EXCELLENT PERFORMANCE IN ANTI-CORROSION

- Cooling tower main body is anti-seismic structure; the steel material meets the JISG3101-SS400 standard. And as the steel is hot-dip galvanized, they are completely rust and corrosion resistant.
- Fan casing and lower water basin are made of FRP material which is anti-corrosion, chemical resistant and impact resistant. Moreover, fan casing's surface is durable, stable and also physically good look.

HIGH EFFICIENT LOW NOISE AXIAL FAN SYSTEM

- Owing to EBARA SHINWA's advanced technology, the applying of motor specially designed for cooling tower and belt drive system can make the fan system to be super low noise.
- Fan casing is designed as a cone shape. Consequently, it can reduce energy consumption, and has a remarkable result in energy saving.
- Fan's material is high quality aluminium alloy which is anti-corrosion and durable. Meanwhile, fan blade and wheel hub are cut into the right angle so it's able to adjust angle by scale.

HIGH EFFICIENT COMPACT BELT DRIVE SYSTEM

- SRS model belt drive system is EBARA SHINWA's original. It is compact and very effective.
- Durable V-Belt and pulley are easy to adjust. Besides, strong belt cover, which is made of FRP, is easy to dismantle and reassemble. Belt cover keeps the system safe and well operated as it safeguards the system against foreign objects carried from the outside.

HIGH QUALITY FILL

- The fill is designed in ripple pattern, used as hanging sheets.
- Maximizes heat exchange efficiency between water and air, as well as slow down water flow rate.
- The unique designed fill can be modified. It is not only sturdy and durable but also easy and fast to clean.

UNIQUE WATER DISTRIBUTION SYSTEM

- Gravity water distribution system is EBARA SHINWA's original. It is well-distributed, and maximizes efficiency of the fill.

EASY TO MAINTAIN

- Belt cover is used with wing bolts, so it's very convenient to dismantle and reassemble by hands.
- Lower water basin is sloped for the purpose of better performance in water flowing and cleaning.
- As there are inspection door, cat walk and ladder, it's convenient to inspect and maintain a cooling tower.

SHORT INSTALLATION TIME

- By separating cooling tower main body and fan casing in transportation (CDW-100 ~ CDW-200), it's easier to transport, assemble at a work site, and consume less installation time as well.

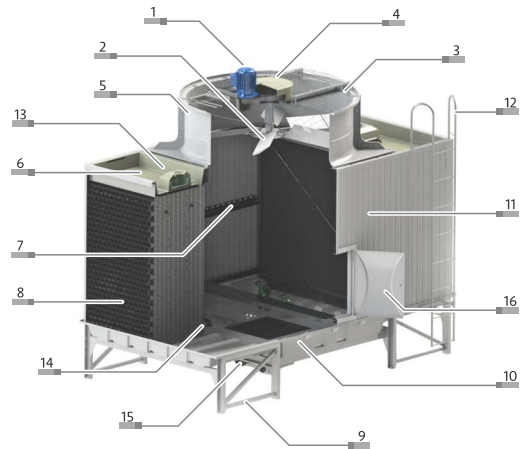
STRUCTURES OF CDW MODELS

MODEL

CDW-100AS-*1 ~ CDW-250AS-*1

NO.	PARTS NAME	MATERIALS	Q'TY	REMARKS
1	Motor		1 Pc	Total Enclosed Outdoor
2	Fan	Alum. Alloy Cast	1 Set	
3	Fan Guard	H.D.G.Steel	1 Set	Hot Dip Galvanized
4	Belt Cover	F.R.P.	1 Set	
5	Fan Casing	F.R.P.	1 Set	
6	Upper Water Basin	F.R.P.	2 Pcs	
7	Framework	H.D.G.Steel	1 Set	Hot Dip Galvanized
8	Fill	P.V.C.	1 Set	
9	Lower Frame	H.D.G.Steel	1 Set	Hot Dip Galvanized
10	Lower Water Basin	F.R.P.	1 Set	
11	Casing Panel	F.R.P.	2 Sides	
12	Ladder	H.D.G.Steel	1 Pc	Hot Dip Galvanized
13	Sprinkler Cover	F.R.P.	2 Pcs	
14	Overflow Pipe	P.V.C.	1 Set	
15	Outlet Pipe	EPT (CDW-100 ~ CDW-200) H.D.G.Steel (CDW-250)	1 Set	Hot Dip Galvanized
16	Inspection Door	F.R.P.	1 Pc	

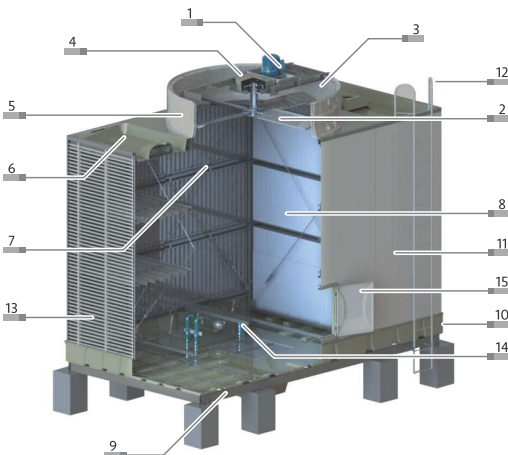
STANDARD COLOR : GRAY



* The structure drawing is an external piping type.

MODEL

CDW-300AS-*1 ~ CDW-350AS-*1



NO.	PARTS NAME	MATERIALS	Q'TY	REMARKS
1	Motor		1 Pc	Total Enclosed Outdoor
2	Fan	Alum. Alloy Cast	1 Set	
3	Fan Guard	H.D.G.Steel	1 Set	Hot Dip Galvanized
4	Belt Cover	F.R.P.	1 Set	
5	Fan Casing	F.R.P.	1 Set	
6	Upper Water Basin	F.R.P.	2 Pcs	
7	Framework	H.D.G.Steel	1 Set	Hot Dip Galvanized
8	Fill	P.V.C.	1 Set	
9	Lower Frame	H.D.G.Steel	1 Set	Hot Dip Galvanized
10	Lower Water Basin	F.R.P.	1 Set	
11	Casing Panel	F.R.P.	2 Sides	
12	Ladder	H.D.G.Steel	1 Pc	Hot Dip Galvanized
13	Louver	P.V.C.	2 Sides	
14	Overflow Pipe	P.V.C.	1 Set	
15	Inspection Door	F.R.P.	1 Pc	

STANDARD COLOR : GRAY

* The structure drawing is an external piping type.

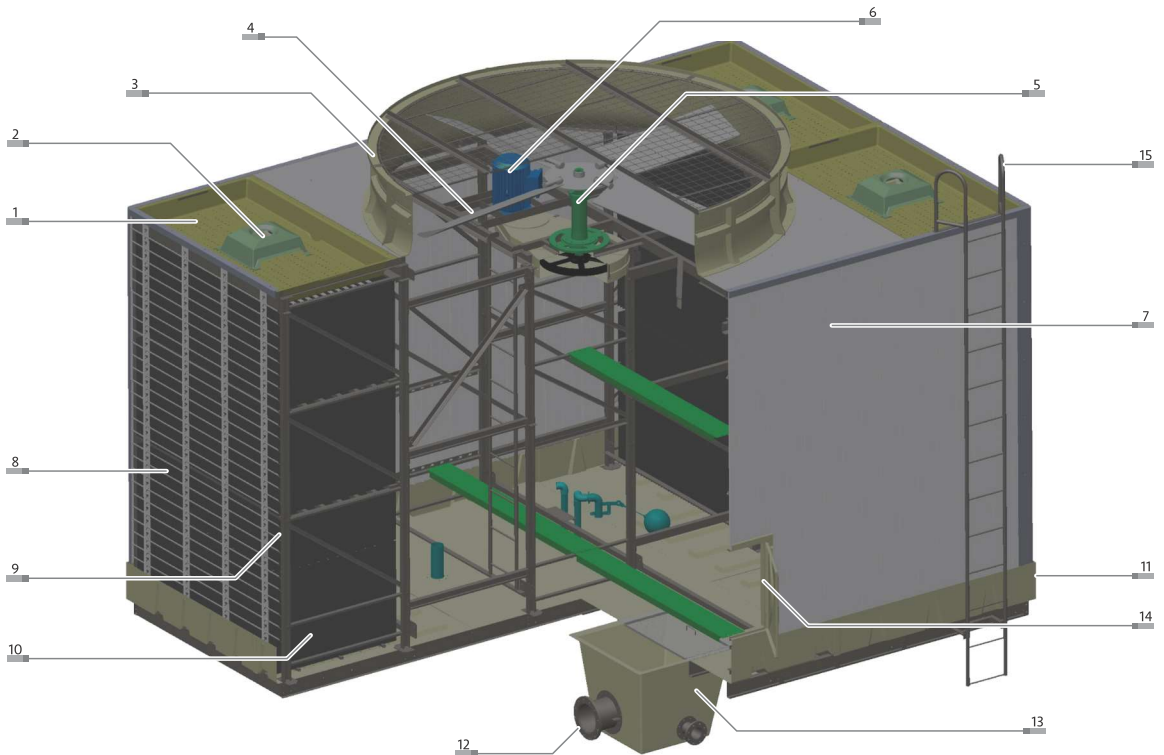
MODEL

CDW-400AS-*1 ~ CDW-800AS-*1

NO.	PARTS NAME	MATERIALS	Q'TY	REMARKS
1	Upper Water Basin	F.R.P.	4 Pcs	
2	Sprinkler Cover	F.R.P.	4 Pcs	
3	Fan Casing	F.R.P.	1 Set	
4	Fan	Alum. Alloy Cast	1 Set	
5	Speed Reducer		1 Pc	
6	Motor		1 Pc	Total Enclosed Outdoor
7	Casing Panel	F.R.P. (CDW-400)	2 Sides	
		P.V.C. (CDW-500~CDW-800)	2 Sides	
8	Louver	P.V.C.	2 Sides	
9	Framework	H.D.G.Steel	1 Set	Hot Dip Galvanized
10	Fill	P.V.C.	1 Set	
11	Lower Water Basin	F.R.P.	1 Set	
12	Outlet Pipe	H.D.G.Steel	1 Set	Hot Dip Galvanized
13	Suction Tank	F.R.P.	1 Pc	
14	Inspection Door	F.R.P.	1 Pc	
15	Ladder	H.D.G.Steel	1 Pc	Hot Dip Galvanized

STANDARD COLOR : GRAY OR WHITE

* The structure drawing is an external piping type.



SPECIFICATION OF CDW MODELS SHOWN IN PARAMETER TABLES

CDW-ASY-X

Standard Condition

Water Temp : Inlet = 37°C, Outlet = 32°C, W.B. = 28°C

MODEL	VOLUME OF OUTLET COLD WATER (m ³ /h)		DIMENSION (mm)			MOTOR POWER	FAN DIAMETER	HEAD LOSS	SHIPPING WEIGHT	OPERATION WEIGHT
	W.B.28°C	W.B.27°C	L (mm)	W (mm)	H (mm)	KW	mm	m	kg	kg
CDW-100ASY-X	100	115	3770	1750	2770	3.7	1500	4	880	2490
CDW-125ASY-X	125	143	3770	1950	2770	3.7	1500	4	910	2520
CDW-135ASY-X	135	155	4070	2150	2770	3.7	1800	4	990	2900
CDW-150ASY-X	150	172	4070	2150	2770	5.5	1800	4	1010	2920
CDW-175ASY-X	175	200	4370	2350	2770	5.5	2100	4	1140	3250
CDW-200ASY-X	200	230	4370	2450	2770	7.5	2100	4	1180	3330
CDW-250ASY-X	250	287	4370	2450	3925	11.0	2200	6	1420	3800
CDW-100ASY-X*2	200	230	3770	3500	2770	3.7 * 2	1500* 2	4	1720	4940
CDW-125ASY-X*2	250	286	3770	3900	2770	3.7 * 2	1500* 2	4	1780	5000
CDW-135ASY-X*2	270	310	4070	4300	2770	3.7 * 2	1800* 2	4	1940	5760
CDW-150ASY-X*2	300	344	4070	4300	2770	5.5 * 2	1800* 2	4	1980	5800
CDW-175ASY-X*2	350	400	4370	4700	2770	5.5 * 2	2100* 2	4	2240	6460
CDW-200ASY-X*2	400	460	4370	4900	2770	7.5 * 2	2100* 2	4	2320	6620
CDW-250ASY-X*2	500	574	4370	4900	3925	11.0 * 2	2200* 2	6	2800	7560
CDW-100ASY-X*3	300	345	3770	5250	2770	3.7 * 3	1500* 3	4	2560	7390
CDW-125ASY-X*3	375	429	3770	5850	2770	3.7 * 3	1500* 3	4	2650	7480
CDW-135ASY-X*3	405	465	4070	6450	2770	3.7 * 3	1800* 3	4	2890	8620
CDW-150ASY-X*3	450	344	4070	6450	2770	5.5 * 3	1800* 3	4	2950	8680
CDW-175ASY-X*3	525	600	4370	7050	2770	5.5 * 3	2100* 3	4	3340	9670
CDW-200ASY-X*3	600	690	4370	7350	2770	7.5 * 3	2100* 3	4	3460	9910
CDW-250ASY-X*3	750	861	4370	7350	3925	11.0 * 3	2200* 3	6	4180	11320
CDW-100ASY-X*n	100 *n	115 *n	3770	1750 *n	2770	3.7 * n	1500 * n	4	880+((n-1)*840)	2490+((n-1)*2450)
CDW-125ASY-X*n	125 *n	143 *n	3770	1950 *n	2770	3.7 * n	1500 * n	4	910+((n-1)*870)	2520+((n-1)*2480)
CDW-135ASY-X*n	135 *n	155 *n	4070	2150 *n	2770	3.7 * n	1800 * n	4	990+((n-1)*950)	2900+((n-1)*2860)
CDW-150ASY-X*n	150 *n	172 *n	4070	2150 *n	2770	5.5 * n	1800 * n	4	1010+((n-1)*970)	2920+((n-1)*2880)
CDW-175ASY-X*n	175 *n	200 *n	4370	2350 *n	2770	5.5 * n	2100 * n	4	1140+((n-1)*1100)	3250+((n-1)*3210)
CDW-200ASY-X*n	200 *n	230 *n	4370	2450 *n	2770	7.5 * n	2100 * n	4	1180+((n-1)*1140)	3330+((n-1)*3290)
CDW-250ASY-X*n	250 *n	287*n	4370	2450 *n	3925	11.0 * n	2200 * n	6	1420+((n-1)*1380)	3800+((n-1)*3760)

NOTES:

- Not all of the cooling tower models are shown in this catalog due to the limited space. The drawing of more than five cells assembled together can be provided separately by contacting our windows.
- Parameter table is subject to change without notice due to more advanced technology. The dimension in this catalog is only a reference, please use the drawing specifically provided for your project in practical site work.
- Our company can provide other special forms of cooling tower to meet your requirements. And please contact us.
- Internal piping type is also available on request (Model CDW-ASY-X ~ CDW-ASY-X *n).

CDW-ASY-C

Standard Condition



Water Temp : Inlet = 37°C, Outlet = 32°C, W.B. = 28°C

MODEL	VOLUME OF OUTLET COLD WATER (m ³ /h)		DIMENSION (mm)			FAN DIAMETER	HEAD LOSS	SHIPPING WEIGHT	OPERATION WEIGHT
	W.B.28°C	W.B.27°C	L (mm)	W (mm)	H (mm)	mm	m	kg	kg
CDW-100ASY-C	100	115	3770	1750	2770	1500	4	900	2510
CDW-125ASY-C	125	143	3770	1950	2770	1500	4	930	2540
CDW-135ASY-C	135	155	4070	2150	2770	1800	4	1010	2920
CDW-150ASY-C	150	172	4070	2150	2770	1800	4	1030	2940
CDW-175ASY-C	175	200	4370	2350	2770	2100	4	1160	3270
CDW-200ASY-C	200	230	4370	2450	2770	2100	4	1200	3350
CDW-250ASY-C	250	287	4370	2450	3925	2200	6	1440	3820
CDW-100ASY-C*2	200	230	3770	3500	2770	1500* 2	4	1760	4980
CDW-125ASY-C*2	250	286	3770	3900	2770	1500* 2	4	1820	5040
CDW-135ASY-C*2	270	310	4070	4300	2770	1800* 2	4	1980	5800
CDW-150ASY-C*2	300	344	4070	4300	2770	1800* 2	4	2020	5840
CDW-175ASY-C*2	350	400	4370	4700	2770	2100* 2	4	2280	6500
CDW-200ASY-C*2	400	460	4370	4900	2770	2100* 2	4	2360	6660
CDW-250ASY-C*2	500	574	4370	4900	3925	2200* 2	6	2840	7600
CDW-100ASY-C*3	300	345	3770	5250	2770	1500* 3	4	2620	7450
CDW-125ASY-C*3	375	429	3770	5850	2770	1500* 3	4	2710	7540
CDW-135ASY-C*3	405	465	4070	6450	2770	1800* 3	4	2950	8680
CDW-150ASY-C*3	450	344	4070	6450	2770	1800* 3	4	3010	8740
CDW-175ASY-C*3	525	600	4370	7050	2770	2100* 3	4	3400	9730
CDW-200ASY-C*3	600	690	4370	7350	2770	2100* 3	4	3520	9970
CDW-250ASY-C*3	750	861	4370	7350	3925	2200* 3	6	4240	11380
CDW-100ASY-C*n	100 *n	115 *n	3770	1750 *n	2770	1500 * n	4	900+((n-1)*860)	2510+((n-1)*2470)
CDW-125ASY-C*n	125 *n	143 *n	3770	1950 *n	2770	1500 * n	4	930+((n-1)*890)	2540+((n-1)*2500)
CDW-135ASY-C*n	135 *n	155 *n	4070	2150 *n	2770	1800 * n	4	1010+((n-1)*970)	2920+((n-1)*2880)
CDW-150ASY-C*n	150 *n	172 *n	4070	2150 *n	2770	1800 * n	4	1030+((n-1)*990)	2940+((n-1)*2900)
CDW-175ASY-C*n	175 *n	200 *n	4370	2350 *n	2770	2100 * n	4	1160+((n-1)*1120)	3270+((n-1)*3230)
CDW-200ASY-C*n	200 *n	230 *n	4370	2450 *n	2770	2100 * n	4	1200+((n-1)*1160)	3350+((n-1)*3310)
CDW-250ASY-C*n	250 *n	287*n	4370	2450 *n	3925	2200 * n	6	1440+((n-1)*1400)	3820+((n-1)*3780)

NOTES:

- Not all of the cooling tower models are shown in this catalog due to the limited space. The drawing of more than five cells assembled together can be provided separately by contacting our windows.
- Parameter table is subject to change without notice due to more advanced technology. The dimension in this catalog is only a reference, please use the drawing specifically provided for your project in practical site work.
- Our company can provide other special forms of cooling tower to meet your requirements. And please contact us.
- Internal piping type is also available on request (Model CDW-ASY-C ~ CDW-ASY-C *n).

SPECIFICATION OF CDW MODELS SHOWN IN PARAMETER TABLES

CDW-ASY-S

Standard Condition

Water Temp : Inlet = 37°C, Outlet = 32°C, W.B. = 28°C

MODEL	VOLUME OF OUTLET COLD WATER (m ³ /h)		DIMENSION (mm)			MOTOR POWER	FAN DIAMETER	HEAD LOSS	SHIPPING WEIGHT	OPERATION WEIGHT
	W.B.28°C	W.B.27°C	L (mm)	W (mm)	H (mm)	KW	mm	m	kg	kg
CDW-300ASY-S	300	344	5570	3100	3900	7.5	2600	6	2675	7650
CDW-350ASY-S	350	402	5570	3100	3900	11.0	2600	6	2700	8010
CDW-400ASY-S	400	459	5870	3800	3950	11.0	3000	6	3700	9975
CDW-450ASY-S	450	517	5870	3800	3950	15.0	3000	6	3725	10000
CDW-500ASY-S	500	574	6470	4600	3875	15.0	3500	6	4240	12110
CDW-550ASY-S	550	632	6470	4600	3875	18.5	3500	6	4265	12135
CDW-600ASY-S	600	689	6470	4600	4520	18.5	3500	8	5060	13940
CDW-650ASY-S	650	746	6470	4600	4520	22.0	3500	8	5085	13965
CDW-700ASY-S	700	804	6870	5400	4520	22.0	4000	8	5765	16360
CDW-750ASY-S	750	961	6870	5400	4520	30.0	4000	8	5790	16385
CDW-800ASY-S	800	918	6870	5800	4520	30.0	4000	8	6250	17940
CDW-300ASY-S*2	600	688	5570	6100	3900	7.5 * 2	2600 * 2	6	4910	14925
CDW-350ASY-S*2	700	804	5570	6100	3900	11.0 * 2	2600 * 2	6	4960	15355
CDW-400ASY-S*2	800	918	5870	7500	3950	11.0 * 2	3000 * 2	6	6930	19400
CDW-450ASY-S*2	900	1034	5870	7500	3950	15.0 * 2	3000 * 2	6	6980	19450
CDW-500ASY-S*2	1000	1148	6470	9100	3875	15.0 * 2	3500 * 2	6	8000	23640
CDW-550ASY-S*2	1100	1264	6470	9100	3875	18.5 * 2	3500 * 2	6	8050	23690
CDW-600ASY-S*2	1200	1378	6470	9100	4520	18.5 * 2	3500 * 2	8	9585	27255
CDW-650ASY-S*2	1300	1492	6470	9100	4520	22.0 * 2	3500 * 2	8	9635	27305
CDW-700ASY-S*2	1400	1608	6870	10700	4520	22.0 * 2	4000 * 2	8	10970	32070
CDW-750ASY-S*2	1500	1922	6870	10700	4520	30.0 * 2	4000 * 2	8	11020	32120
CDW-800ASY-S*2	1600	1836	6870	11500	4520	30.0 * 2	4000 * 2	8	11920	35210
CDW-300ASY-S*3	900	1032	5570	9100	3900	7.5 * 3	2600 * 3	6	7145	22200
CDW-350ASY-S*3	1050	1206	5570	9100	3900	11.0 * 3	2600 * 3	6	7220	22700
CDW-400ASY-S*3	1200	1377	5870	11200	3900	11.0 * 3	3000 * 3	6	10160	28825
CDW-450ASY-S*3	1350	1551	5870	11200	3950	15.0 * 3	3000 * 3	6	10235	28900
CDW-500ASY-S*3	1500	1722	6470	13600	3875	15.0 * 3	3500 * 3	6	11760	35170
CDW-550ASY-S*3	1650	1896	6470	13600	3875	18.5 * 3	3500 * 3	6	11835	35245
CDW-600ASY-S*3	1800	2067	6470	13600	4520	18.5 * 3	3500 * 3	8	14110	40570
CDW-650ASY-S*3	1950	2238	6470	13600	4520	22.0 * 3	3500 * 3	8	14185	40645
CDW-700ASY-S*3	2100	2412	6870	16000	4520	22.0 * 3	4000 * 3	8	16175	47780
CDW-750ASY-S*3	2250	2883	6870	16000	4520	30.0 * 3	4000 * 3	8	16250	47855
CDW-800ASY-S*3	2400	2754	6870	17200	4520	30.0 * 3	4000 * 3	8	17590	52480
CDW-300ASY-S*n	300 * n	344 * n	5570	(3100*n)-(100*(n-1))	3900	7.5 * n	2600 * n	6	2675+((n-1)*2235)	7650+((n-1)*7275)
CDW-350ASY-S*n	350 * n	402 * n	5570	(3100*n)-(100*(n-1))	3900	11.0 * n	2600 * n	6	2700+((n-1)*2260)	8010+((n-1)*7345)
CDW-400ASY-S*n	400 * n	459 * n	5870	(3800*n)-(100*(n-1))	3950	11.0 * n	3000 * n	6	3700+((n-1)*3230)	9975+((n-1)*9425)
CDW-450ASY-S*n	450 * n	517 * n	5870	(3800*n)-(100*(n-1))	3950	15.0 * n	3000 * n	6	3725+((n-1)*3255)	10000+((n-1)*9450)
CDW-500ASY-S*n	500 * n	574 * n	6470	(4600*n)-(100*(n-1))	3875	15.0 * n	3500 * n	6	4240+((n-1)*3760)	12110+((n-1)*11530)
CDW-550ASY-S*n	550 * n	632 * n	6470	(4600*n)-(100*(n-1))	3875	18.5 * n	3500 * n	6	4265+((n-1)*3785)	12135+((n-1)*11555)
CDW-600ASY-S*n	600 * n	689 * n	6470	(4600*n)-(100*(n-1))	4520	18.5 * n	3500 * n	8	5060+((n-1)*4525)	13940+((n-1)*13315)
CDW-650ASY-S*n	650 * n	746 * n	6470	(4600*n)-(100*(n-1))	4520	22.0 * n	3500 * n	8	5085+((n-1)*4550)	13965+((n-1)*13340)
CDW-700ASY-S*n	700 * n	804 * n	6870	(5400*n)-(100*(n-1))	4520	22.0 * n	4000 * n	8	5765+((n-1)*5205)	16360+((n-1)*15710)
CDW-750ASY-S*n	750 * n	961 * n	6870	(5400*n)-(100*(n-1))	4520	30.0 * n	4000 * n	8	5790+((n-1)*5230)	16385+((n-1)*15735)
CDW-800ASY-S*n	800 * n	918 * n	6870	(5800*n)-(100*(n-1))	4520	30.0 * n	4000 * n	8	6250+((n-1)*5670)	17940+((n-1)*17270)

NOTES:

- Not all of the cooling tower models are shown in this catalog due to the limited space. The drawing of more than five cells assembled together can be provided separately by contacting our windows.
- Parameter table is subject to change without notice due to more advanced technology. The dimension in this catalog is only a reference, please use the drawing specifically provided for your project in practical site work.
- Our company can provide other special forms of cooling tower to meet your requirements. And please contact us.
- Internal piping type is available only CDW - 300 ~ 400.

CDW-ASY-C

Standard Condition



Water Temp : Inlet = 37°C, Outlet = 32°C, W.B. = 28°C

MODEL	VOLUME OF OUTLET COLD WATER (m ³ /h)		DIMENSION (mm)			FAN DIAMETER	HEAD LOSS	SHIPPING WEIGHT	OPERATION WEIGHT
	W.B.28°C	W.B.27°C	L (mm)	W (mm)	H (mm)	mm	m	kg	kg
CDW-300ASY-C	300	344	5570	3100	3900	2600	6	2700	7675
CDW-350ASY-C	350	402	5870	3800	3950	3000	6	3700	9975
CDW-400ASY-C	400	459	5870	3800	3950	3000	6	3725	10000
CDW-450ASY-C	450	517	6470	4600	3875	3500	6	4240	12110
CDW-500ASY-C	500	574	6470	4600	3875	3500	6	4265	12135
CDW-550ASY-C	550	632	6470	4600	4520	3500	8	5060	13940
CDW-600ASY-C	600	689	6470	4600	4520	3500	8	5085	13965
CDW-650ASY-C	650	746	6870	5400	4520	4000	8	5765	16360
CDW-700ASY-C	700	804	6870	5400	4520	4000	8	5790	16385
CDW-750ASY-C	750	961	6870	5800	4520	4000	8	6250	17940
CDW-800ASY-C	800	918	6870	5800	4520	4000	8	6275	17965
CDW-300ASY-C*2	600	688	5570	6100	3900	2600 * 2	6	4960	14975
CDW-350ASY-C*2	700	804	5870	7500	3950	3000 * 2	6	6930	19400
CDW-400ASY-C*2	800	918	5870	7500	3950	3000 * 2	6	6980	19450
CDW-450ASY-C*2	900	1034	6470	9100	3875	3500 * 2	6	8000	23640
CDW-500ASY-C*2	1000	1148	6470	9100	3875	3500 * 2	6	8050	23690
CDW-550ASY-C*2	1100	1264	6470	9100	4520	3500 * 2	8	9585	27255
CDW-600ASY-C*2	1200	1378	6470	9100	4520	3500 * 2	8	9635	27305
CDW-650ASY-C*2	1300	1492	6870	10700	4520	4000 * 2	8	10970	32070
CDW-700ASY-C*2	1400	1608	6870	10700	4520	4000 * 2	8	11020	32120
CDW-750ASY-C*2	1500	1922	6870	11500	4520	4000 * 2	8	11920	35210
CDW-800ASY-C*2	1600	1836	6870	11500	4520	4000 * 2	8	11970	35260
CDW-300ASY-C*3	900	1032	5570	9100	3900	2600 * 3	6	7220	22275
CDW-350ASY-C*3	1050	1206	5870	11200	3950	3000 * 3	6	10160	28825
CDW-400ASY-C*3	1200	1377	5870	11200	3950	3000 * 3	6	10235	28900
CDW-450ASY-C*3	1350	1551	6470	13600	3875	3500 * 3	6	11760	35170
CDW-500ASY-C*3	1500	1722	6470	13600	3875	3500 * 3	6	11835	35245
CDW-550ASY-C*3	1650	1896	6470	13600	4520	3500 * 3	8	14110	40570
CDW-600ASY-C*3	1800	2067	6470	13600	4520	3500 * 3	8	14185	40645
CDW-650ASY-C*3	1950	2238	6870	16000	4520	4000 * 3	8	16175	47780
CDW-700ASY-C*3	2100	2412	6870	16000	4520	4000 * 3	8	16250	47855
CDW-750ASY-C*3	2250	2883	6870	17200	4520	4000 * 3	8	17590	52480
CDW-800ASY-C*3	2400	2754	6870	17200	4520	4000 * 3	8	17665	52555
CDW-300ASY-C*n	300 * n	344 * n	5570	(3100*n)-(100*(n-1))	3900	2600 * n	6	2700+((n-1)*2260)	7675+((n-1)*7300)
CDW-350ASY-C*n	350 * n	402 * n	5870	(3800*n)-(100*(n-1))	3950	3000 * n	6	3700+((n-1)*3230)	9975+((n-1)*9425)
CDW-400ASY-C*n	400 * n	459 * n	5870	(3800*n)-(100*(n-1))	3950	3000 * n	6	3725+((n-1)*3255)	10000+((n-1)*9450)
CDW-450ASY-C*n	450 * n	517 * n	6470	(4600*n)-(100*(n-1))	3875	3500 * n	6	4240+((n-1)*3760)	12110+((n-1)*11530)
CDW-500ASY-C*n	500 * n	574 * n	6470	(4600*n)-(100*(n-1))	3875	3500 * n	6	4265+((n-1)*3785)	12135+((n-1)*11555)
CDW-550ASY-C*n	550 * n	632 * n	6470	(4600*n)-(100*(n-1))	4520	3500 * n	8	5060+((n-1)*4525)	13940+((n-1)*13315)
CDW-600ASY-C*n	600 * n	689 * n	6470	(4600*n)-(100*(n-1))	4520	3500 * n	8	5085+((n-1)*4550)	13965+((n-1)*13340)
CDW-650ASY-C*n	650 * n	746 * n	6870	(5400*n)-(100*(n-1))	4520	4000 * n	8	5765+((n-1)*5205)	16360+((n-1)*15710)
CDW-700ASY-C*n	700 * n	804 * n	6870	(5400*n)-(100*(n-1))	4520	4000 * n	8	5790+((n-1)*5230)	16385+((n-1)*15735)
CDW-750ASY-C*n	750 * n	961 * n	6870	(5800*n)-(100*(n-1))	4520	4000 * n	8	6250+((n-1)*5670)	17940+((n-1)*17270)
CDW-800ASY-C*n	800 * n	918 * n	6870	(5800*n)-(100*(n-1))	4520	4000 * n	8	6275+((n-1)*5695)	17965+((n-1)*17295)

NOTES:

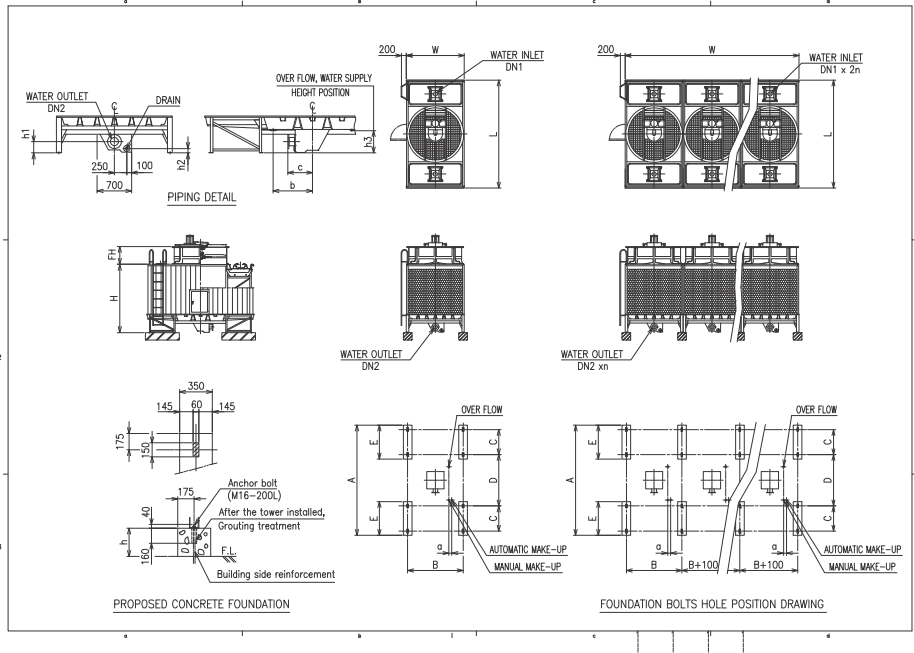
- Not all of the cooling tower models are shown in this catalog due to the limited space. The drawing of more than five cells assembled together can be provided separately by contacting our windows.
- Parameter table is subject to change without notice due to more advanced technology. The dimension in this catalog is only a reference, please use the drawing specifically provided for your project in practical site work.
- Our company can provide other special forms of cooling tower to meet your requirements. And please contact us.
- Internal piping type is available only CDW - 300 ~ 400.

DIMENSION & FOUNDATION DRAWINGS OF CDW MODELS

MODEL

CDW-100ASY[ASSY]-X ~ CDW-250ASY[ASSY]-X

CDW-100ASY[ASSY]-X *n ~ CDW-250ASY[ASSY]-X*n



CDW	L	W	H	FH	h1	h2	h3	a	b	c	A	B	C	D	E	DN1 (A)	DN2 (A)	Motor (kW)
100	3770	1750	2770	615	230	90	450	120	500	460	3870	1650	1020	1480	1370	100 x 2	125 x 1	3.7
125	3770	1950	2770	615	230	90	450	120	500	460	3870	1850	1020	1480	1370	100 x 2	125 x 1	3.7
135	4070	2150	2770	645	230	90	450	120	650	500	4170	2050	1020	1780	1370	100 x 2	150 x 1	3.7
150	4070	2150	2770	645	230	90	450	120	650	500	4170	2050	1020	1780	1370	100 x 2	150 x 1	5.5
175	4370	2350	2770	715	230	90	450	120	800	500	4470	2250	1020	2080	1370	100 x 2	150 x 1	5.5
200	4370	2450	2770	715	230	90	450	120	800	500	4470	2350	1020	2080	1370	100 x 2	150 x 1	7.5
250	4370	2450	3925	720	310	170	530	120	800	570	4510	2350	1040	2080	1390	125 x 2	200 x 1	11.0

CDW	L	W	H	FH	h1	h2	h3	a	b	c	A	B	C	D	E	DN1 (A)	DN2 (A)	Motor (kW)
100* n	3770	1750 x n	2770	615	230	90	450	120	500	460	3870	1650	1020	1480	1370	100 x 2n	125 x n	3.7 * n
125* n	3770	1950 x n	2770	615	230	90	450	120	500	460	3870	1850	1020	1480	1370	100 x 2n	125 x n	3.7 * n
135* n	4070	2150 x n	2770	645	230	90	450	120	650	500	4170	2050	1020	1780	1370	100 x 2n	150 x n	3.7 * n
150* n	4070	2150 x n	2770	645	230	90	450	120	650	500	4170	2050	1020	1780	1370	100 x 2n	150 x n	5.5 * n
175* n	4370	2350 x n	2770	715	230	90	450	120	800	500	4470	2250	1020	2080	1370	100 x 2n	150 x n	5.5 * n
200* n	4370	2450 x n	2770	715	230	90	450	120	800	500	4470	2350	1020	2080	1370	100 x 2n	150 x n	7.5 * n
250* n	4370	2450 x n	3925	720	310	170	530	120	800	570	4510	2350	1040	2080	1390	125 x 2n	200 x n	11.0 * n

* Internal piping type is also available on request (CDW-100ASW ~ CDW-250ASW).

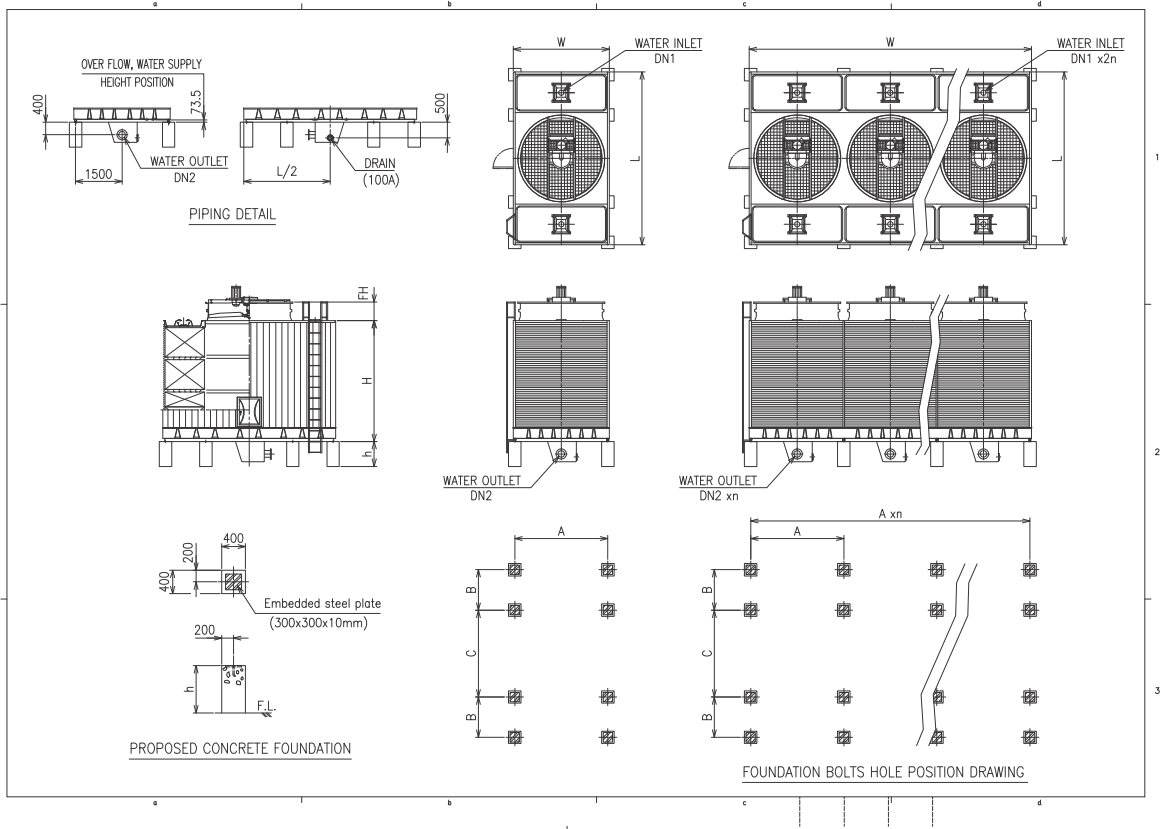
* ASSY means super low noise.

* Foundation (h) is customer's scope.

MODEL

CDW-300ASY-S ~ CDW-350ASY-S

CDW-300ASY-S *n ~ CDW-350ASY-S*n



CDW	L	W	H	FH	A	B	C	DN1	DN2	Motor (kW)
300*1	5570	3100	3900	600	3000	1300	2800	150 x 2	200 x 1	7.5
350*1	5570	3100	3900	600	3000	1300	2800	150 x 2	200 x 1	11.0

CDW	L	W	H	FH	A	B	C	DN1	DN2	Motor (kW)
300* n	5570	(3100*n)-(100*(n-1))	3900	600	3000	1400	2600	150 x 2n	200 x n	7.5 * n
350* n	5570	(3100*n)-(100*(n-1))	3900	600	3000	1400	2600	150 x 2n	200 x n	11.0 * n

* Internal piping type is also available on request (CDW-300ASW ~ CDW-350ASW).

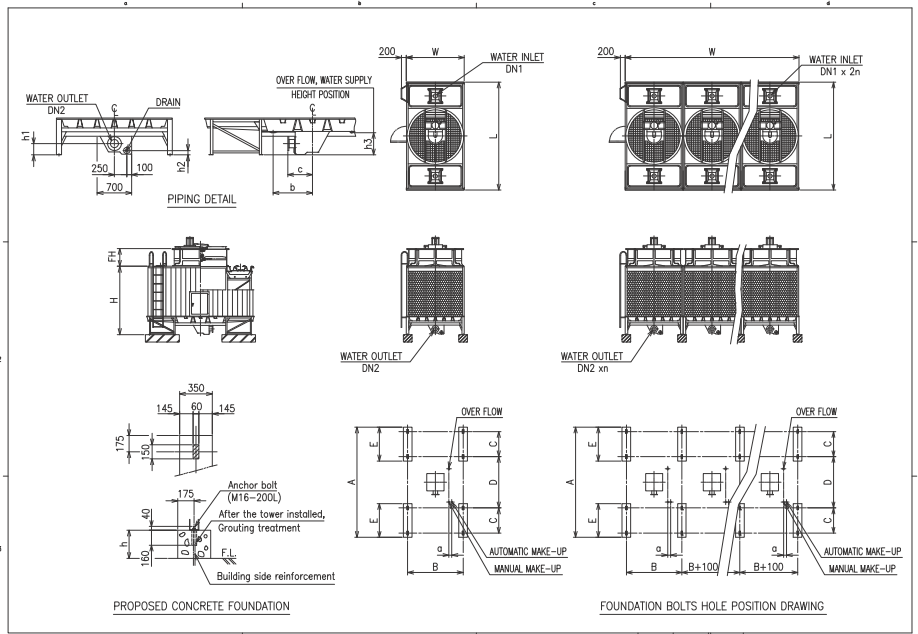


DIMENSION & FOUNDATION DRAWINGS OF CDW MODELS

MODEL

CDW-100ASY[ASSY]-C ~ CDW-250ASY[ASSY]-C (CTI CERTIFICATE MODEL)

CDW-100ASY[ASSY]-C *n ~ CDW-250ASY[ASSY]-C*n (CTI CERTIFICATE MODEL)



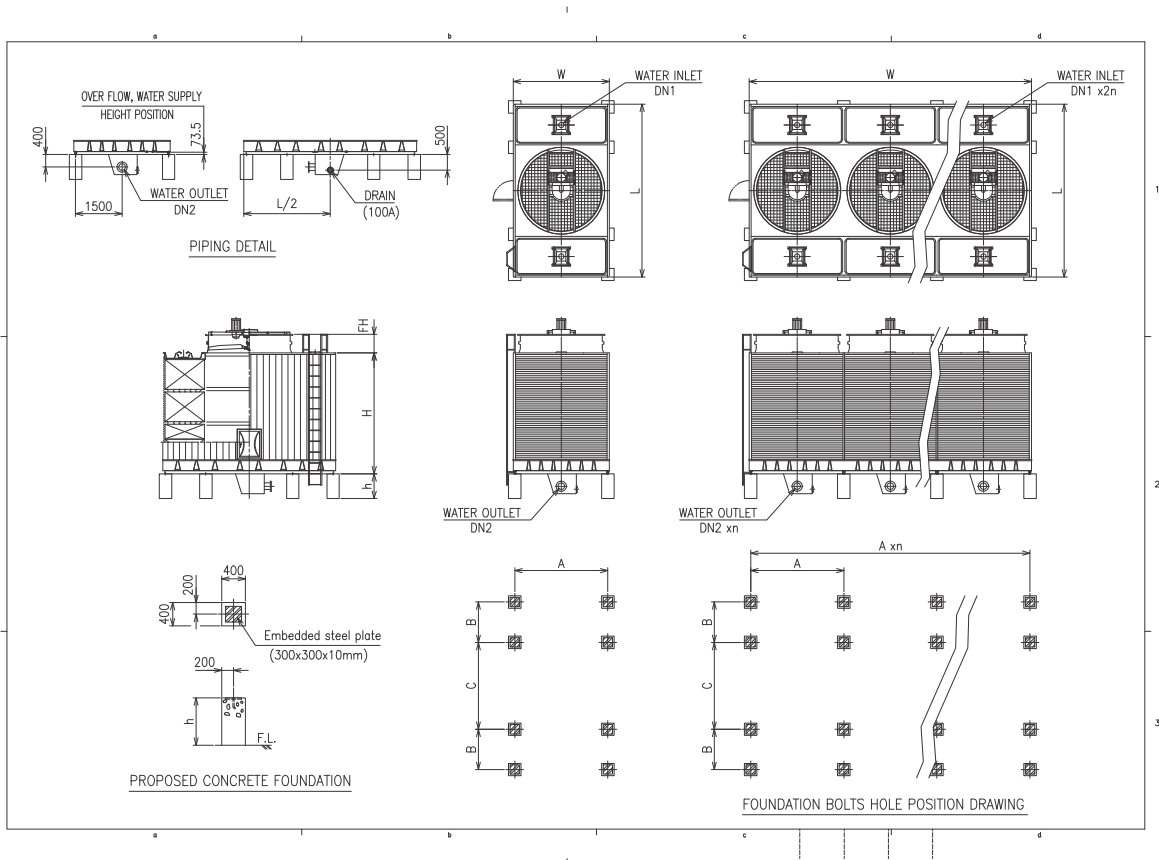
CDW	L	W	H	FH	h1	h2	h3	a	b	c	A	B	C	D	E	DN1 (A)	DN2 (A)
100	3770	1750	2770	615	230	90	450	120	500	460	3870	1650	1020	1480	1370	100 x 2	125 x 1
125	3770	1950	2770	615	230	90	450	120	500	460	3870	1850	1020	1480	1370	100 x 2	125 x 1
135	4070	2150	2770	645	230	90	450	120	650	500	4170	2050	1020	1780	1370	100 x 2	150 x 1
150	4070	2150	2770	645	230	90	450	120	650	500	4170	2050	1020	1780	1370	100 x 2	150 x 1
175	4370	2350	2770	715	230	90	450	120	800	500	4470	2250	1020	2080	1370	100 x 2	150 x 1
200	4370	2450	2770	715	230	90	450	120	800	500	4470	2350	1020	2080	1370	100 x 2	150 x 1
250	4370	2450	3925	720	310	170	530	120	800	570	4510	2350	1040	2080	1390	125 x 2	200 x 1

CDW	L	W	H	FH	h1	h2	h3	a	b	c	A	B	C	D	E	DN1 (A)	DN2 (A)
100* n	3770	1750 x n	2770	615	230	90	450	120	500	460	3870	1650	1020	1480	1370	100 x 2n	125 x n
125* n	3770	1950 x n	2770	615	230	90	450	120	500	460	3870	1850	1020	1480	1370	100 x 2n	125 x n
135* n	4070	2150 x n	2770	645	230	90	450	120	650	500	4170	2050	1020	1780	1370	100 x 2n	150 x n
150* n	4070	2150 x n	2770	645	230	90	450	120	650	500	4170	2050	1020	1780	1370	100 x 2n	150 x n
175* n	4370	2350 x n	2770	715	230	90	450	120	800	500	4470	2250	1020	2080	1370	100 x 2n	150 x n
200* n	4370	2450 x n	2770	715	230	90	450	120	800	500	4470	2350	1020	2080	1370	100 x 2n	150 x n
250* n	4370	2450 x n	3925	720	310	170	530	120	800	570	4510	2350	1040	2080	1390	125 x 2n	200 x n

* ASSY means super low noise.
 * Foundation (h) is customer's scope.

MODEL

CDW-300ASY-C (CTI CERTIFICATE MODEL)



CDW	L	W	H	FH	A	B	C	DN1	DN2
300	5570	3100	3900	600	3000	1300	2800	150 x 2	200 x 1

CDW	L	W	H	FH	A	B	C	DN1	DN2
300* n	5570	(3100*n)-(100*(n-1))	3900	600	3000	1300	2800	150 x 2n	200 x n

* Internal piping type is also available on request (CDW-300ASW ~ CDW-350ASW).

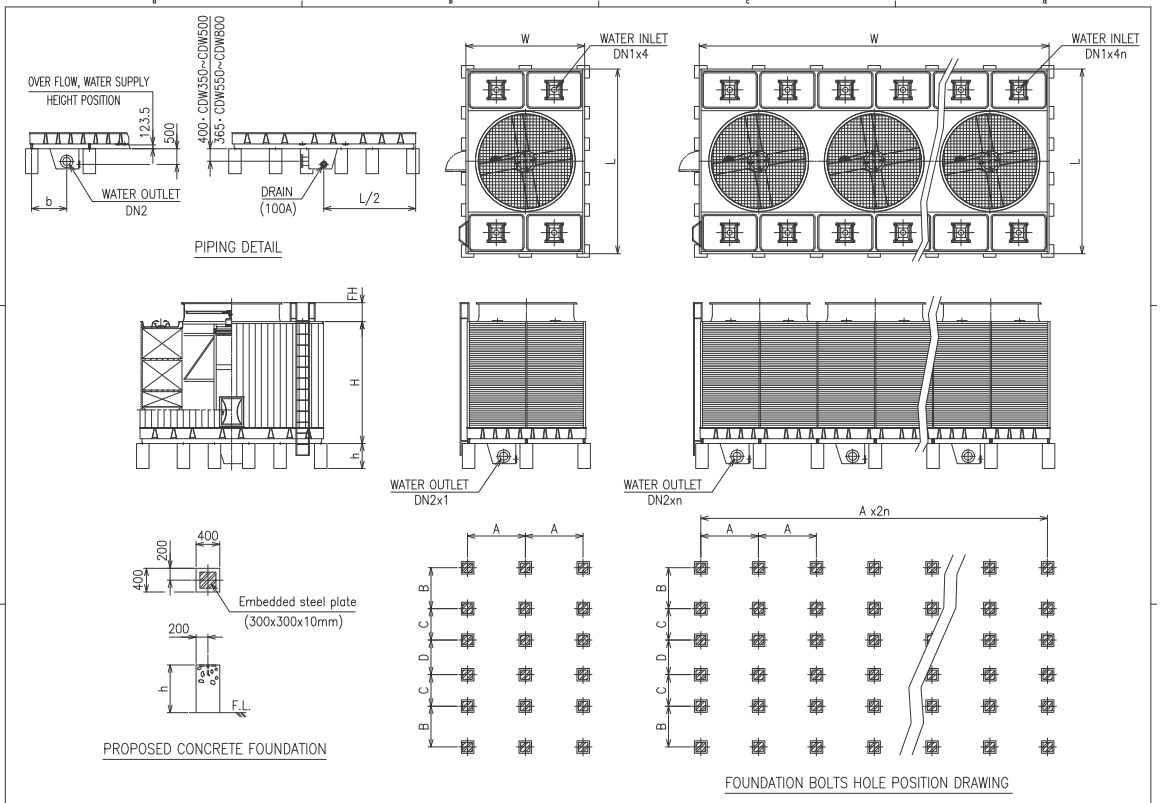
* Foundation (h) is customer's scope.

DIMENSION & FOUNDATION DRAWINGS OF CDW MODELS

MODEL

CDW-350ASY-C ~ CDW-800ASY-C (CTI CERTIFICATE MODEL)

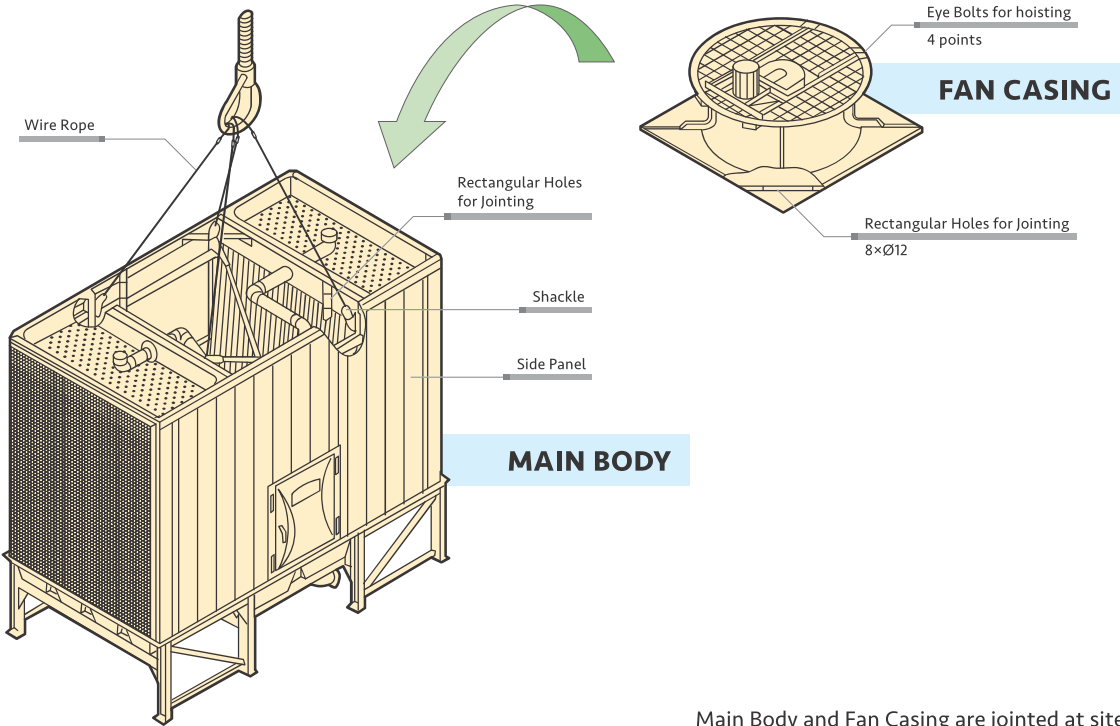
CDW-350ASY-C*n ~ CDW-800ASY-C*n (CTI CERTIFICATE MODEL)



CDW	L	W (1 cell)	W (n cell)	H	FH	A	B	C	D	b	DN1	DN2
350* n	5870	3800	(3800*n)-(100*(n-1))	3950	600	1850	1300	1000	1100	1025	125 x 4n	250 x n
400* n	5870	3800	(3800*n)-(100*(n-1))	3950	600	1850	1300	1000	1100	1025	125 x 4n	250 x n
450* n	6470	3800	(4600*n)-(100*(n-1))	3875	600	2250	1300	1300	1100	1125	125 x 4n	250 x n
500* n	6470	4600	(4600*n)-(100*(n-1))	3875	600	2250	1300	1300	1100	1125	125 x 4n	250 x n
550* n	6470	4600	(4600*n)-(100*(n-1))	4520	600	2250	1300	1300	1100	1125	150 x 4n	300 x n
600* n	6470	4600	(4600*n)-(100*(n-1))	4520	600	2250	1300	1300	1100	1125	150 x 4n	300 x n
650* n	6870	5400	(5400*n)-(100*(n-1))	4520	600	2650	1300	1500	1100	1325	150 x 4n	300 x n
700* n	6870	5400	(5400*n)-(100*(n-1))	4520	600	2650	1300	1500	1100	1325	150 x 4n	300 x n
750* n	6870	5800	(5800*n)-(100*(n-1))	4520	600	2850	1300	1500	1100	1425	150 x 4n	350 x n
800* n	6870	5800	(5800*n)-(100*(n-1))	4520	600	2850	1300	1500	1100	1425	150 x 4n	350 x n

* Foundation (h) is customer's scope.

DELIVERY AND LIFT UP ARRANGEMENT (CDW-100 ~ CDW-250)



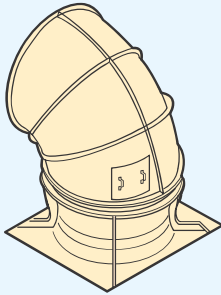
Main Body and Fan Casing are jointed at site.

CDW-X CDW-C	MAIN BODY			FAN CASING		
	MASS (kg)		Q'TY	MASS (kg)		Q'TY
	CDW-X	CDW-C		CDW-X	CDW-C	
100	670	670	1	210	230	1
125	700	700	1	210	230	1
135	730	730	1	260	280	1
150	730	730	1	280	300	1
175	830	830	1	310	330	1
200	850	850	1	330	350	1
250	1060	1060	1	360	380	1
135	730	730	2	260	280	2
150	730	730	2	280	300	2
175	830	830	2	310	330	2
200	850	850	2	330	350	2
250	1060	1660	2	360	380	2
150	730	730	3	280	300	3
175	830	830	3	310	330	3
200	850	850	3	330	350	3
250	1060	1060	3	360	380	3
175	830	830	4	310	330	4
200	850	850	4	330	350	4
250	1060	1060	4	360	380	4

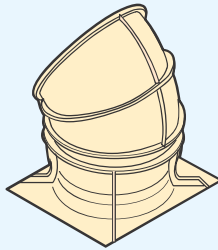
OPTIONS FOR COOLING TOWER

FRP DUCT

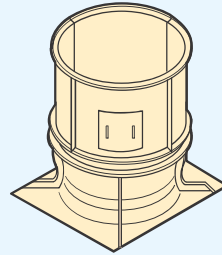
Avoid air short circuiting
Reduce noise level



90° Elbow Duct



60° Elbow Duct

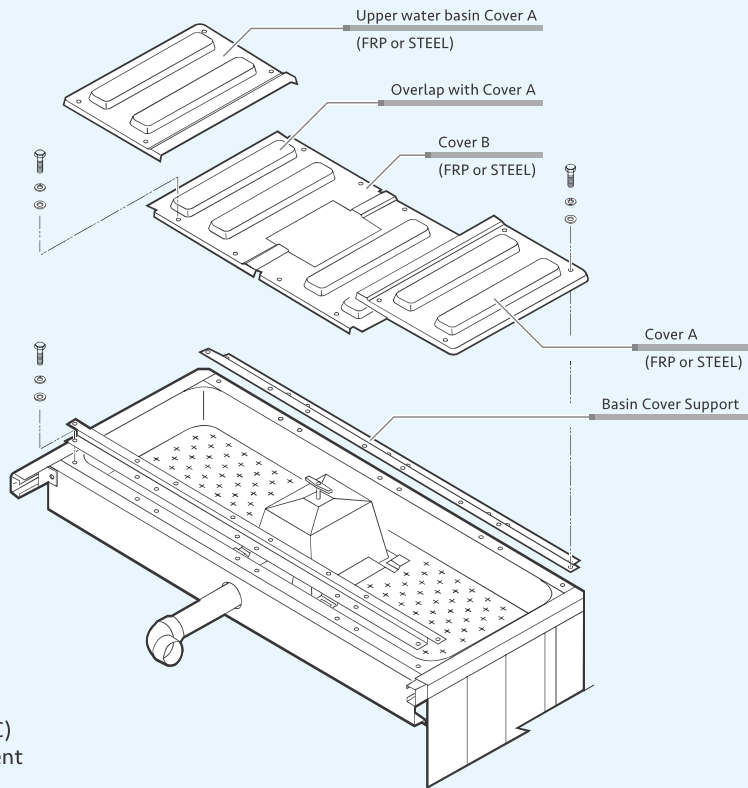


Straight Duct (1mH, 2mH)

* CDW-300 above matches 45° Elbow Duct.

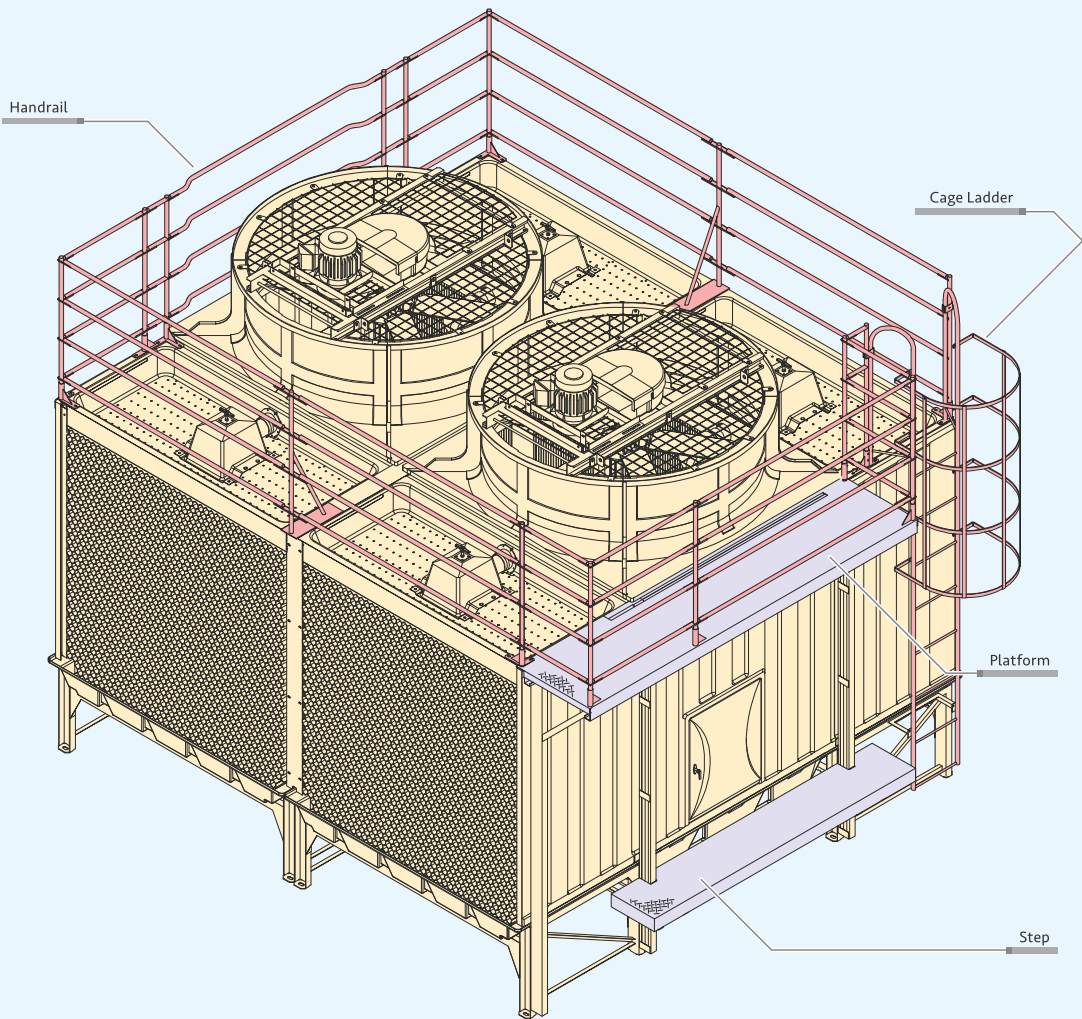
UPPER WATER BASIN COVER (FRP OR STEEL)

Protect from invasion of dust into the upper basin
Interrupt sunlight which causes algae growth
Possible to walk on the cover



Other Option Items
Partition
High Temp Fill (Less than 80°C)
Vibration Absorption Equipment
Water Treatment Equipment

HANDRAIL, CAGE LADDER, PLATFORM AND STEP



CAUTIONS FOR INSTALLATION WORKS

1. SCOPE OF WORKS (STANDARD)

The following works at site shall be out of our scope.

- ❶ Lift up and carry works
- ❷ Foundation works (incl. installation of anchor bolts, mortar filled works and installation of steel frame stand)
- ❸ Piping works
- ❹ Electric (wiring) works

2. SELECTION OF INSTALLATION PLACE

Select an installation place based on the Building Standards Act or Regulations.

- ❶ A place with good ventilation where discharged air from cooling tower will not recirculate.
- ❷ Avoid places with much dust, dirt or smoke and places near heat source.

- ❸ If the walls will be placed around the cooling tower, at least the cooling tower louver height space needed between them. The wall should be lower than the cooling tower.
- ❹ Select a place where the noise is not magnified by echoes. Avoid the vicinity of windows of neighboring houses as much as possible.
- ❺ Avoid a place where has no fresh air intake for air conditioning.

3. OTHER CAUTIONS

- ❶ Foundation level should be horizontally.
- ❷ Foundation bolts should be furnished before cooling towers are delivered to the site.

OPERATIONAL CAUTIONS

1. OPERATION

- ❶ The specified water flow must be maintained to obtain and hold the rated capacity.
- ❷ As V-Belt may stretch at the early stage of operation, make the first check the day after the operation commissioning to adjust, if any. Thereafter, the periodic checks and adjustment are necessary.
- ❸ During the operation always watch for the vibration, noise, the electric current and the cooling water temperature. Vibration and noise primarily originates from the moving parts such as belt speed reducer, motor and fan. Do not overlook even slightest abnormalities.

2. MAINTENANCE

- ❶ Regularly drain water and clean the lower water basin and strainer.
- ❷ Water quality control are recommended to prevent poor water quality, scale and algae growth.
- ❸ Consumption parts such as V-Belts and bearings are required to replace periodically (estimated timing for exchanging a V-Belt is roughly 7000 – 8000 hours).

Precautions for Safety

Cooling towers described in this catalogue are of our standard specifications.

Before Use

- Before use, read the "Instruction Manual" carefully and use the towers correctly.

Before Installation

- Request installation from the distributor or professional agency.
- Improper installation work may cause toppling, water leakage, electric shocks or fire which will endanger operations.
- Make sure to use extra-cost options such as an electric heater designated by us.
- Space is required for maintenance work around the machine. Lack of space may obstruct safety work and cause injuries.

Locations for Use

- Do not install in places where combustible gases leak or flammables exist. Fire may occur in places where flammable gases are generated, flow in or are retained, and carbon fibers are floated.

Maintenance and Inspection

- Periodic maintenance and inspection is required other than inspections for daily operation. Improper maintenance and inspection may cause a fire, electric shocks and burns. As maintenance and inspection requires special skills, consult manufacturer or distributor.



Notice for Water Quality Control

If the circulating water is left as it is, slime deposits in the water bath and piping will develop. The slime is formed from many kinds of algae and fungi, particularly; metabolic products from algae sometimes help fungi grow.

Disease-causing bacteria among bacteria may also exist, therefore, please be advised to clean or control the water quality at least once a month to prevent algae from forming.