



**EBARA**



Quality  
ISO 9001

SAI GLOBAL  
Lic. No. QE C22090

SQPB-8002-R1

# **SELF PRIMING PUMP**

## **MODEL SQPB**



# APPLICATIONS

1. Irrigation
2. Drainage
3. Sprinklers

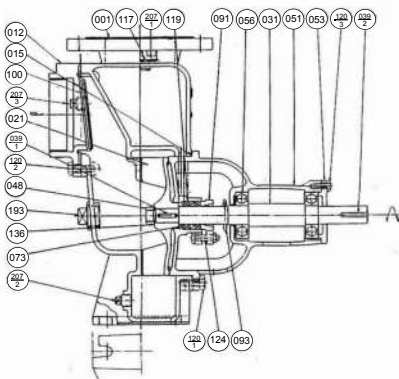
# FEATURES

1. No priming is required excepting for initial use.
2. Special designed casing provides very rapid priming for extended piping.
3. Maintenance is facilitated due to packing type.
4. Water mixed with a little sand or mud can be pumped up due to semi - open impeller design.
5. Easy installation with engine for belt driven due to c.c.w rotation.

# SPECIFICATION MODEL SQPB

Liquid	: River water and Fresh water (Optional : Sea Water)
Temperature	: 0 - 40°C
Rotation	: Counter clock wise when viewed from drive end
Installation	: Outdoors
Material;	
- Casing	: Cast Iron (Optional : Bronze)
- Impeller	: Cast Iron (Optional : Bronze)
- Shaft	: Carbon Steel (Optional : Stainless Steel)
Contruccion;	
- Impeller	: Semi Open
- Stuffing Box	: Packing
- Bearing	: Sealed Ball Bearing
Accessories	: Strainer, Discharge Elbow, Hose Clamp, suction Hose Nipple, Standard V - Pulley

# SECTIONAL VIEW & OTHER



Part No.	PART NAME	MATERIAL	No. FOR UNIT
001	Casing	Cast Iron	1
012	Suction Cover	Cast Iron	1
021	Impeller	Cast Iron	1
031	Shaft	Carbon Steel	1
039-1	Key	Carbon Steel	1
039-2	Key	Carbon Steel	1
048	Impeller Nut	Brass	1
051	Bearing Housing	Cast Iron	1
053	Bearing Cover	Cast Iron	1
056	Ball Bearing	-	2
073	Stage Piece	Steel	1
091	Gland	Cast Iron	1
093	Deflector	NBR	1
100	Check Valve	Rubber	1
115	O-Ring	NBR	1
117	Gasket	Rubber	1
119	Gland Packing	Asbestos	3
120-1	Casing Bolt	Steel	4
120-2	Suction Cover Bolt	Steel	3
120-3	Bolt	Steel	2
124	Gland Bolt and Nut	Steel	1
136	Washer	Brass	1
193	Plug	Cast Iron	2
207-1	Priming Plug	Plastic	1
207-2	Drain Plug	Cast Iron	1
207-3	Plug	Cast Iron	1



PUMP COUPLED WITH ENGINE  
\* This picture doesn't show belt cover for safety belt cover should be install.



CUT MODEL

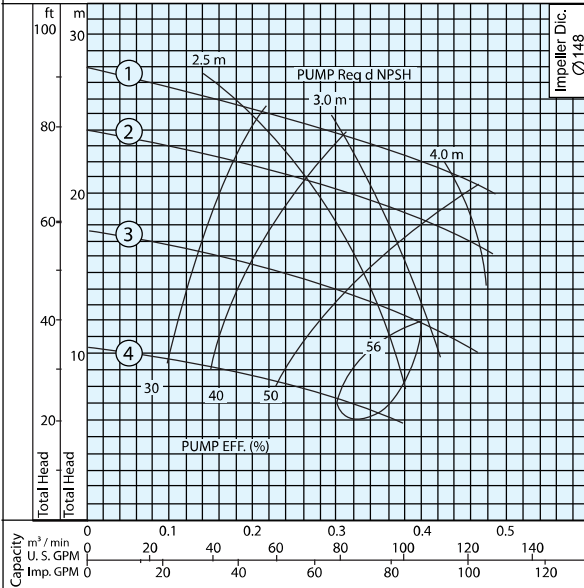


SEMI OPEN IMPELLER

# PERFORMANCE CURVE

## 50 SQPB

According to JIS testing code B8301.B8032  
s.g=1.0 vTS = 1.0Cst

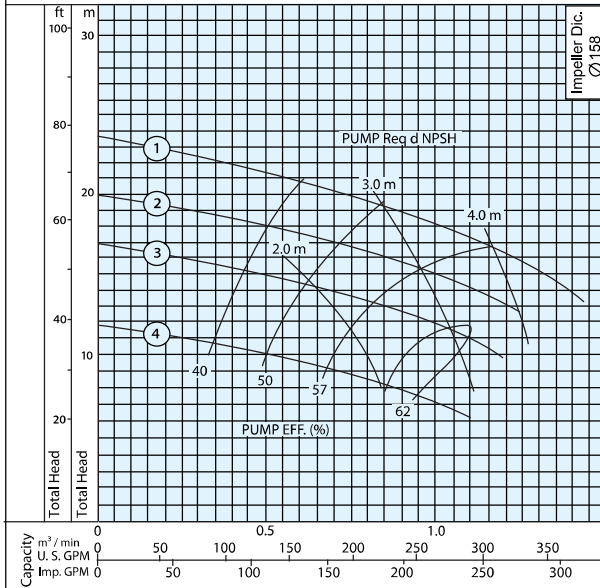


No.	Pump Speed	Motor Power	Engine Power	Self Priming	
				Suction Lift	Priming Time
1.	2900 min <sup>-1</sup>	3.7 kw	5 Hp	7 m	4 min
2.	2700	2.2	3	7	5
3.	2300	1.5	2	7	6
4.	1750	0.75	1	6	7

SQPB 5401R2

## 80 SQPB

According to JIS testing code B8301.B8032  
s.g=1.0 vTS = 1.0Cst

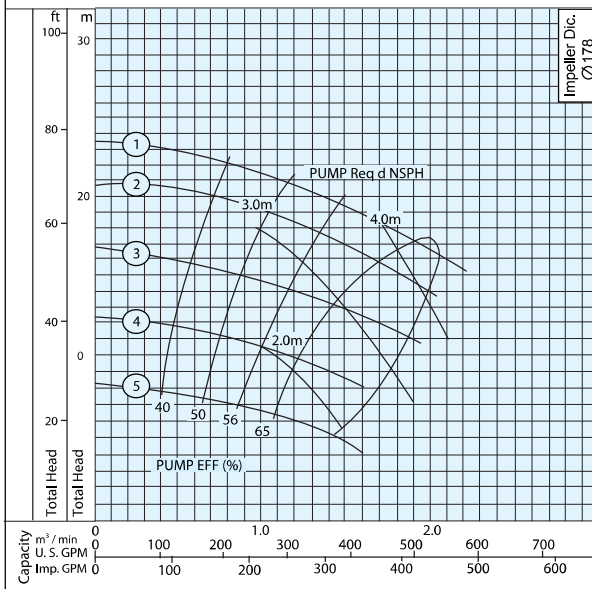


No.	Pump Speed	Motor Power	Engine Power	Self Priming	
				Suction Lift	Priming Time
1.	2500 min <sup>-1</sup>	5.5 kw	7.5 Hp	6 m	5 min
2.	2300	5.5	7.5	6	5
3.	2100	3.7	5	6	7
4.	1750	2.2	3	7	8

SQPB 5402R2

## 100 SQPB

According to JIS testing code B8301.B8032  
s.g=1.0 vTS = 1.0Cst

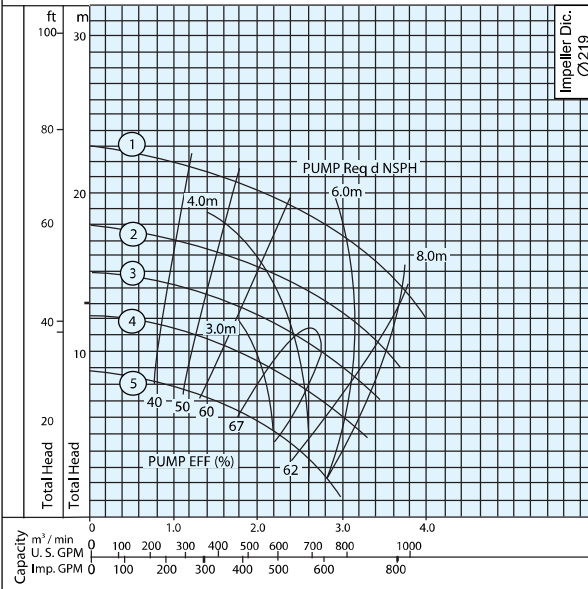


No.	Pump Speed	Motor Power	Engine Power	Self Priming	
				Suction Lift	Priming Time
1.	2400 min <sup>-1</sup>	11 kw	15 Hp	7 m	5 min
2.	2250	7.5	10	6	6
3.	2000	5.5	7.5	6	7
4.	1750	3.7	5	6	8
5.	1450	2.2	3	5	8

SQPB 5403R2

## 150 SQPB

According to JIS testing code B8301.B8032  
s.g=1.0 vTS = 1.0Cst

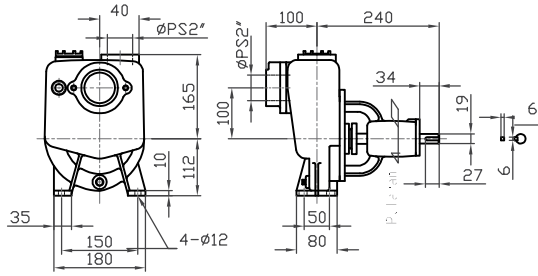


No.	Pump Speed	Motor Power	Engine Power	Self Priming	
				Suction Lift	Priming Time
1.	2000 min <sup>-1</sup>	15 kw	20 Hp	6 m	5 min
2.	1750	11	15	6	5
3.	1600	7.5	10	5.5	6
4.	1450	5.5	7.5	5	6
5.	1250	3.7	5	4.5	6

SQPB 5404R2

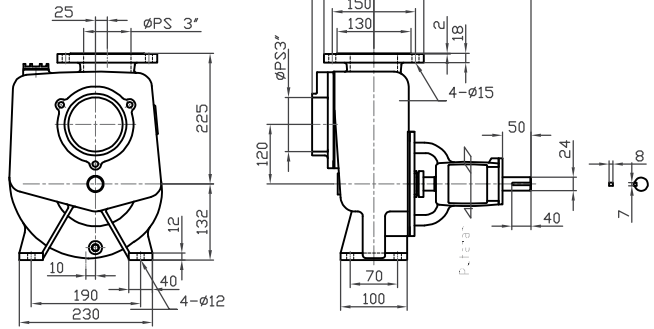
# DIMENSION

## 50 SQPB



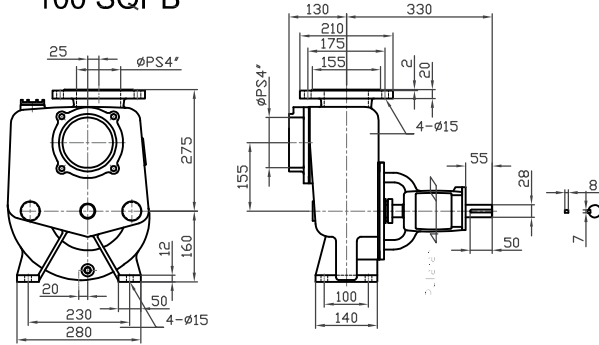
Weight: (17.8 KG)

## 80 SQPB



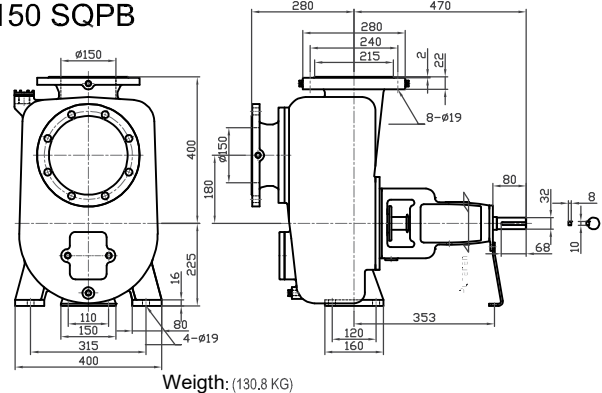
Weight: (27.8 KG)

## 100 SQPB



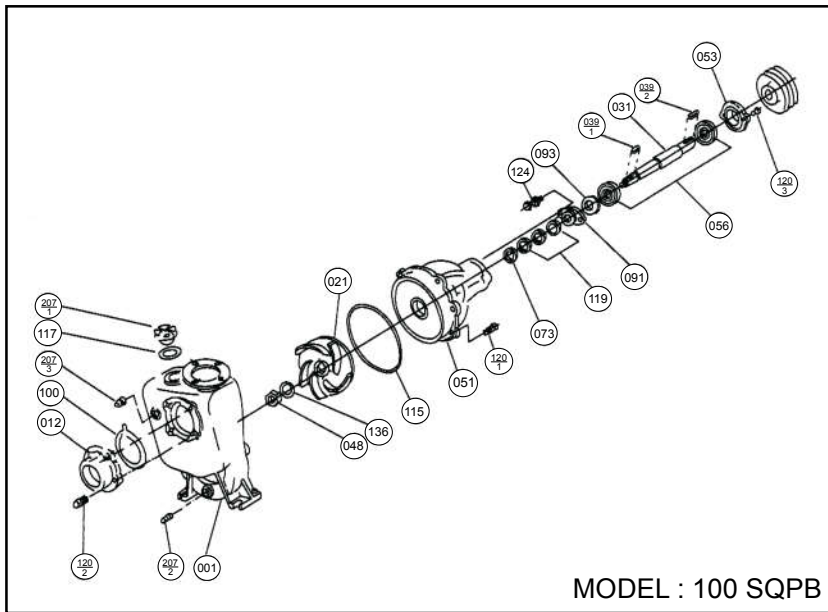
Weight: (42.8 KG)

## 150 SQPB



Weight: (130.8 KG)

# DISASSEMBLY



Part No.	PART NAME
001	CASING
012	IMPELLER COVER
021	IMPELLER
031	SHAFT
039 - 1	KEY IMPELLER
039 - 2	KEY PULLEY
048	IMPELLER NUT
051	BEARING HOUSING
053	BEARING COVER
056	ROLLER BEARING
073	STAGE PIECE
091	GLAND
093	DEFLECTOR
100	CHECK VALVE
115	O - RING
117	GASKET
119	GLAND PACKING
120 - 1	CASING BOLT
120 - 2	SUCTION COVER BOLT
120 - 3	BOLT
124	GLAND BOLT AND NUT
136	WASHER
207 - 1	PRIMING PLUG
207 - 2	DRAIN PLUG
207 - 3	PLUG



Distributor / Dealer